

Relação do aço

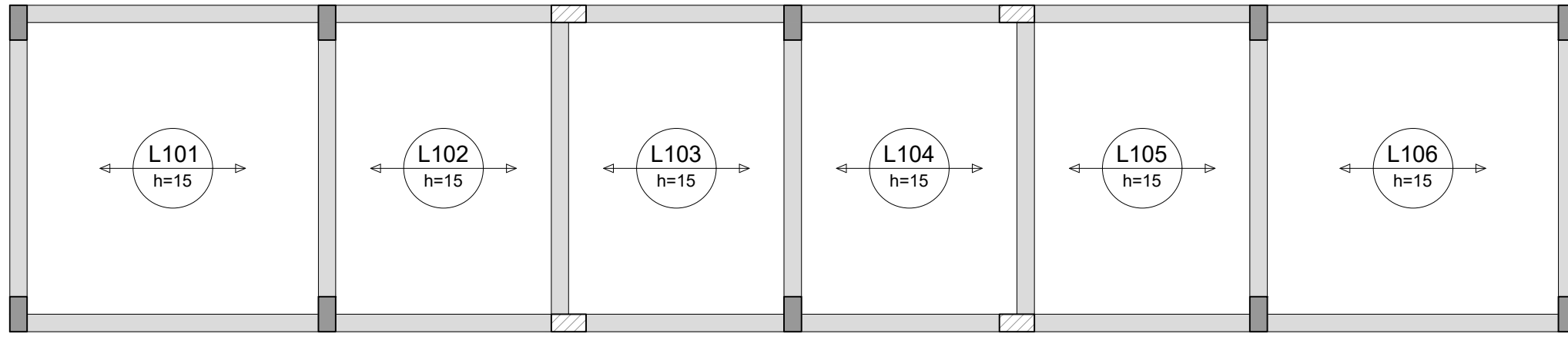
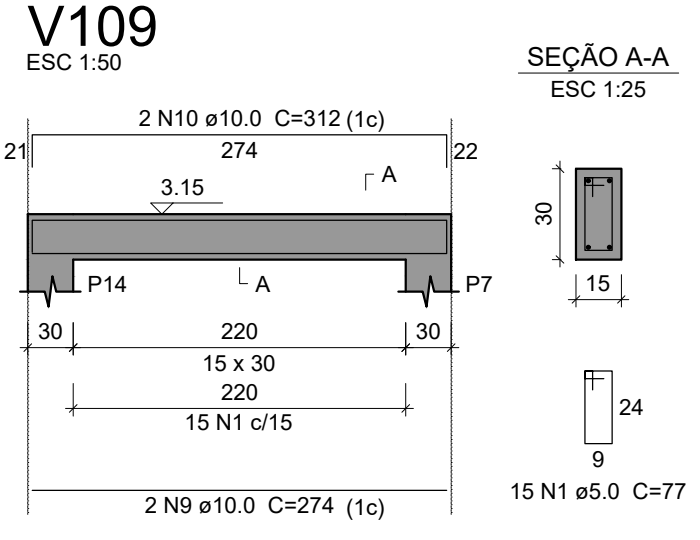
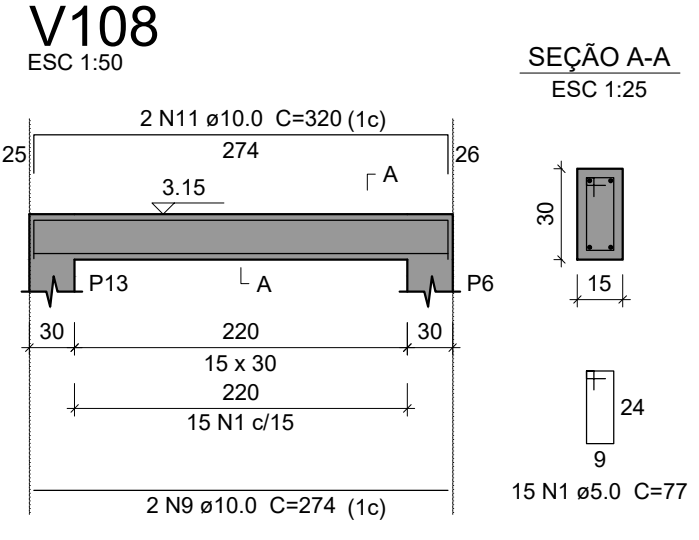
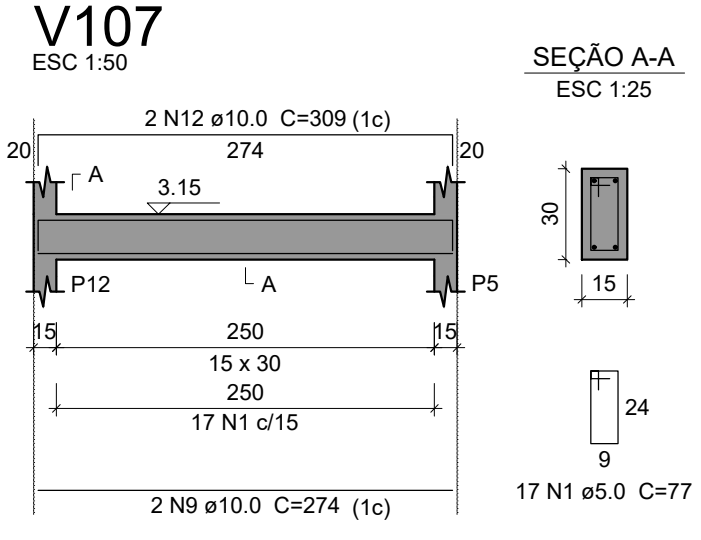
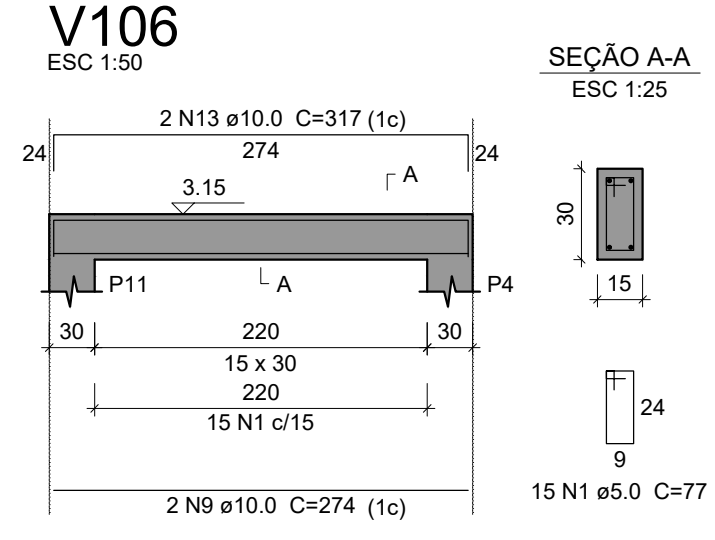
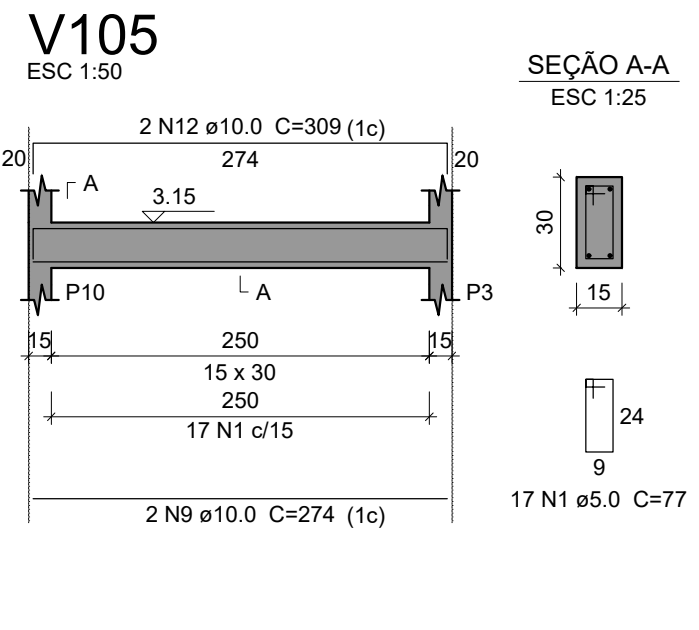
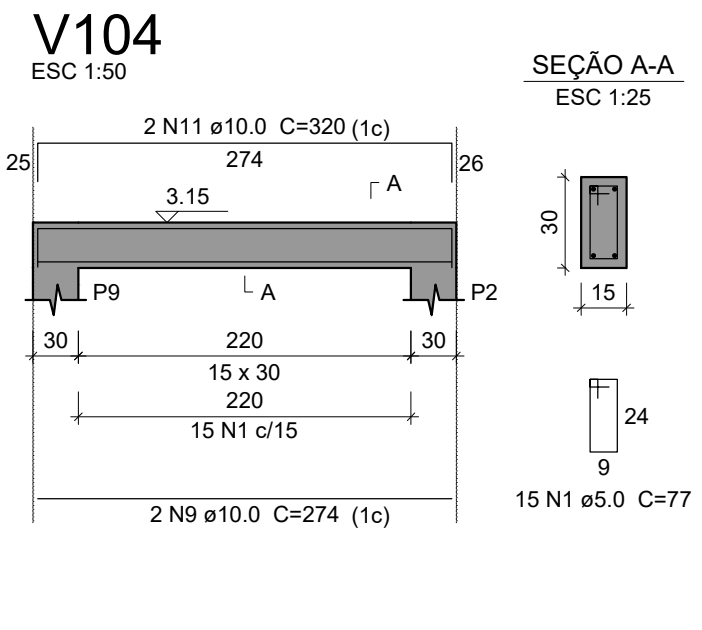
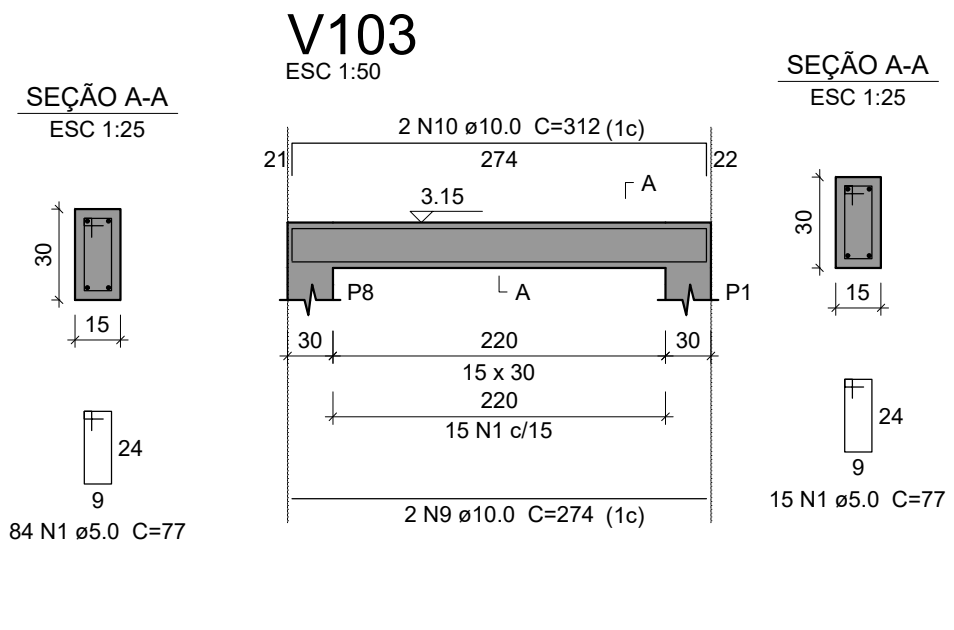
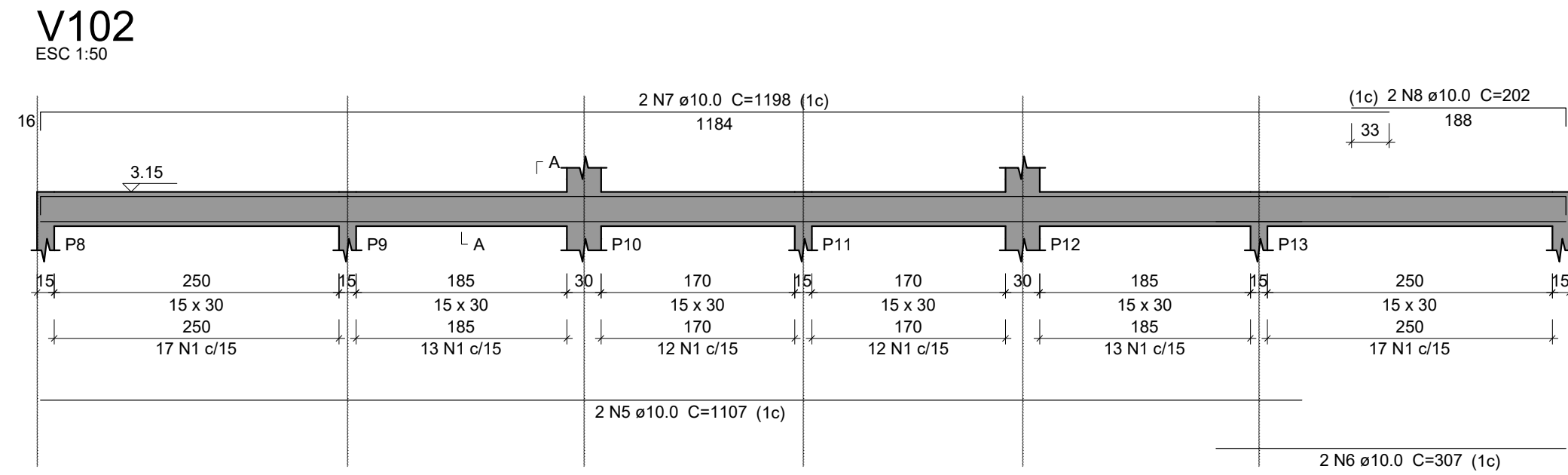
1:	10xP1	4xP3
	Positivos X	V101
	V102	V103
	V104	V105
	V106	V107
	V108	V109
2:	4xP3	V201
	V202	V203
	V204	

AÇO	N	DIAM (mm)	QUANT	C.UNIT (cm)	C.TOTAL (cm)
CA60	1	5.0	739	77	56903
	2	5.0	108	54	5832
CA50	3	10.0	40	312	12480
	4	10.0	16	353	5648
	5	10.0	4	1107	4428
	6	10.0	4	307	1228
	7	10.0	4	1198	4792
	8	10.0	4	202	808
	9	10.0	14	274	3836
	10	10.0	4	312	1248
	11	10.0	4	320	1280
	12	10.0	4	309	1236
	13	10.0	2	317	634
	14	10.0	16	157	2512
	15	10.0	4	409	1636
	16	10.0	4	436	1744
	17	10.0	4	293	1172
	18	10.0	4	301	1204

Resumo do aço

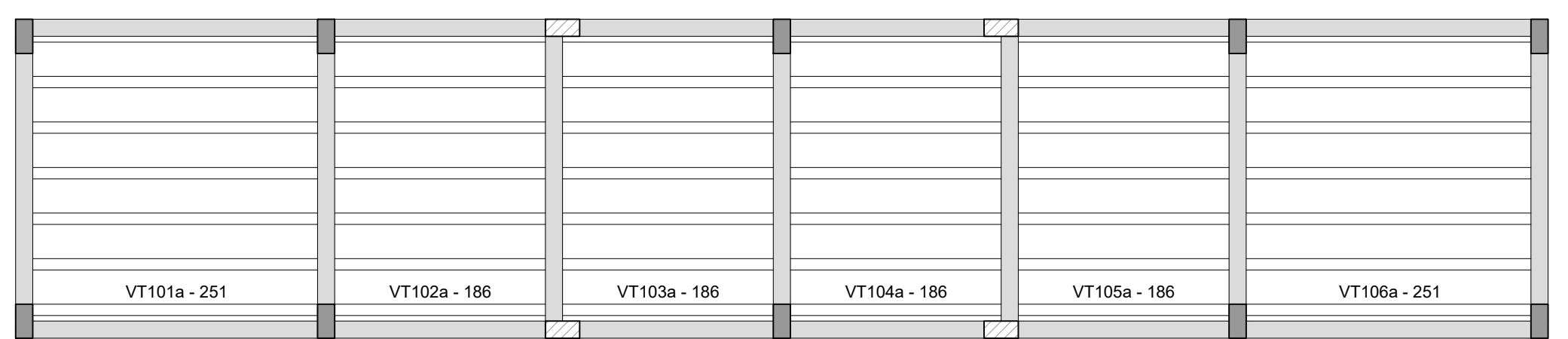
AÇO	DIAM (mm)	C.TOTAL (m)	PESO + 10 % (kg)
CA50	10.0	458.9	311.2
CA60	5.0	627.4	106.4
PESO TOTAL (kg)			
CA50	311.2		
CA60	106.4		

Volume de concreto (C-25) = 6.55 m³
Área de forma = 76.91 m²



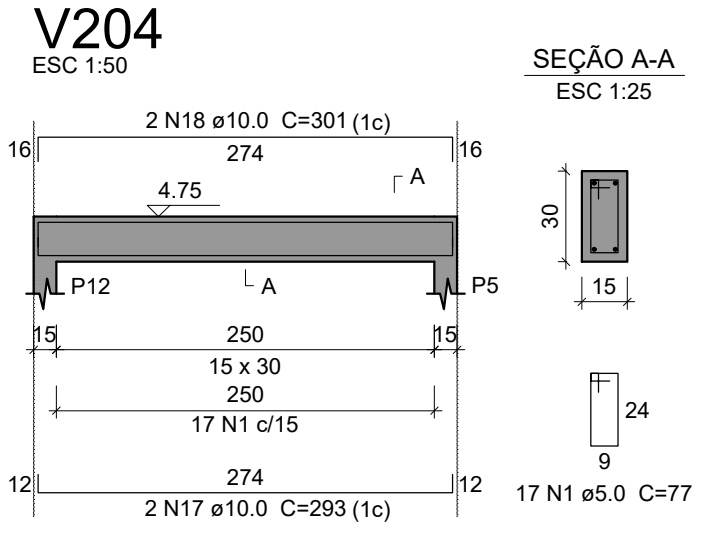
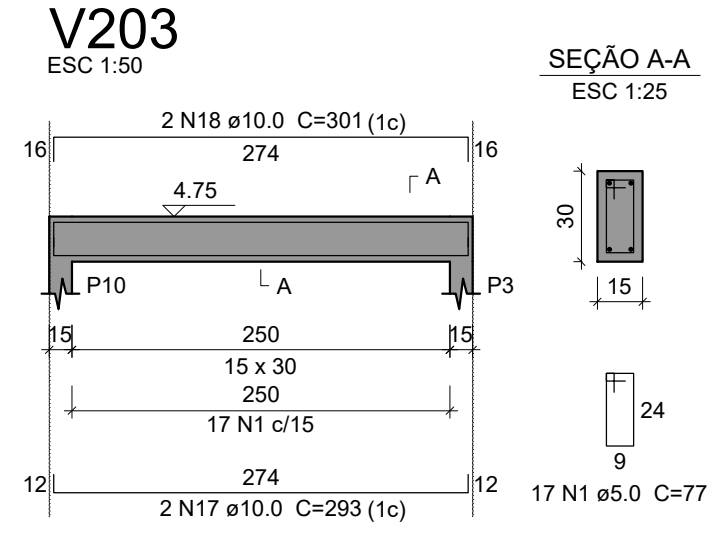
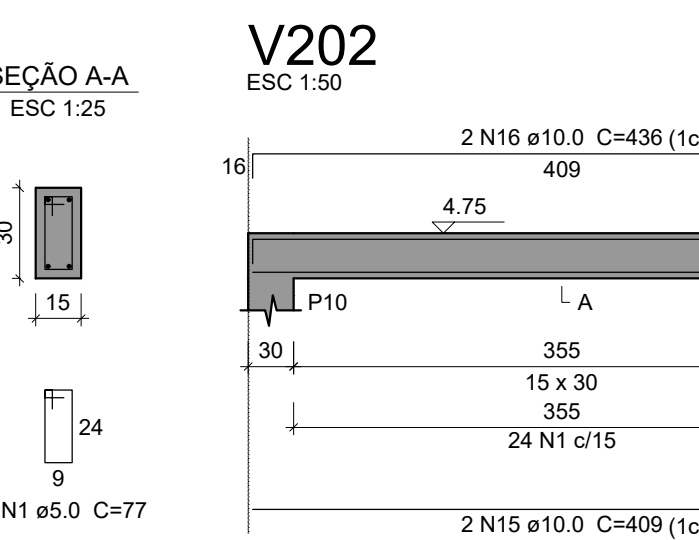
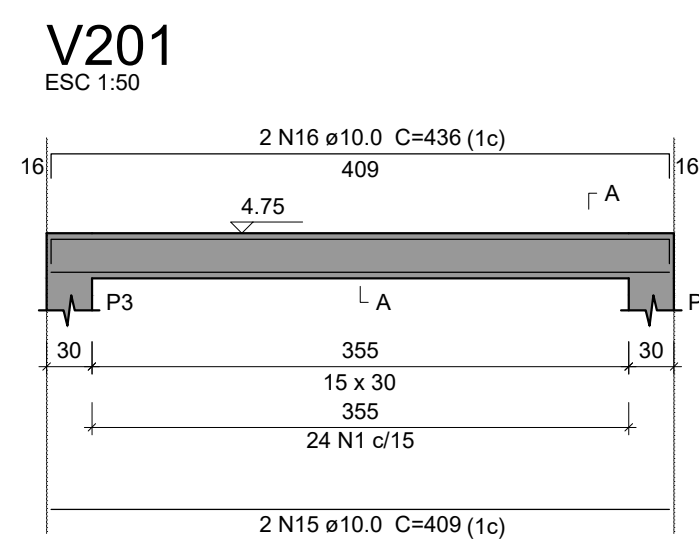
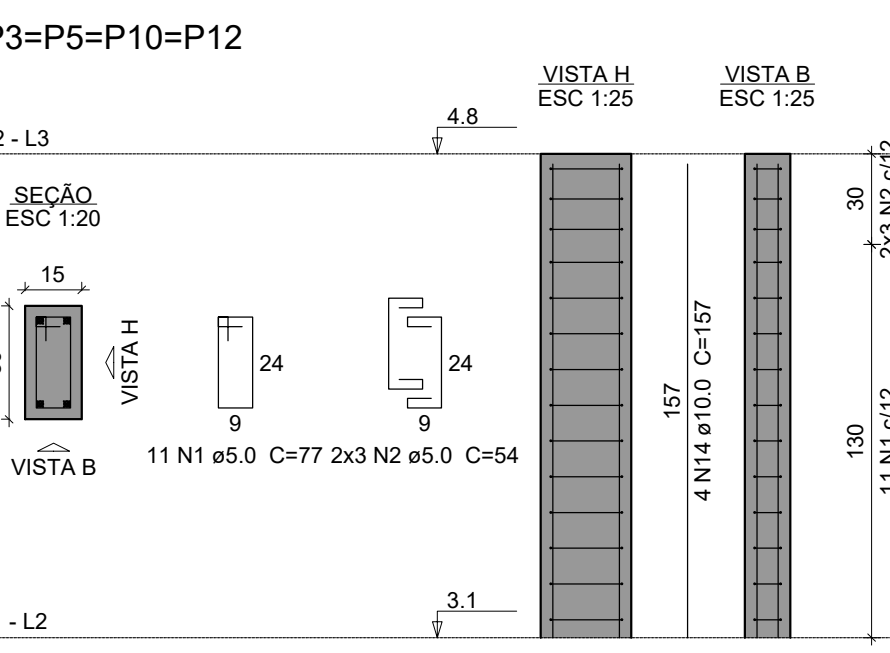
ARMAÇÃO POSITIVA DAS LAJES DO PAVIMENTO 1 (EIXO X)

Escala 1:50



PLANTA DE VIGOTAS PRÉ-MOLDADAS

Escala 1:50



AGM
DE LIMA
ENGENHARIA

TÍTULO:
CONSTRUÇÃO DO CENTRO ESPORTIVO DE ITAIPAVA DO GRAJAU - MA

PROPRIETÁRIO:
PREFEITURA MUNICIPAL DE ITAIPAVA DO GRAJAU-MA

ENDEREÇO:
ITAIPAVA DO GRAJAU - MA

DISCRIMINAÇÃO:
PROJETO ESTRUTURAL - QUIOSQUE

DATA:
NOVEMBRO/25

AUTOR:
CYNTHIA FARIAS
CREA Nº 111854214-2

ESCALA:
INDICADA

FORMATO:
A-1

Nº PRANCHA:
03/03